



*Management and Conservation*

# Monitoring Gray Wolf Populations Using Multiple Survey Methods

DAVID E. AUSBAND,<sup>1</sup> *Montana Cooperative Wildlife Research Unit, Natural Sciences Room 205, University of Montana, Missoula, MT 59812, USA*

LINDSEY N. RICH,<sup>2</sup> *Montana Cooperative Wildlife Research Unit, Natural Sciences Room 205, University of Montana, Missoula, MT 59812, USA*

ELIZABETH M. GLENN,<sup>3</sup> *Montana Cooperative Wildlife Research Unit, Natural Sciences Room 205, University of Montana, Missoula, MT 59812, USA*

MICHAEL S. MITCHELL, *U.S. Geological Survey, Montana Cooperative Wildlife Research Unit, Natural Sciences Room 205, University of Montana, Missoula, MT 59812, USA*

PETE ZAGER, *Idaho Department of Fish and Game, 3316 16th Street, Lewiston, ID 83501, USA*

DAVID A. W. MILLER, *Department of Ecosystem Science and Management, Pennsylvania State University, University Park, PA 16827, USA*

LISETTE P. WAITS, *Department of Fish and Wildlife Resources, University of Idaho, P.O. Box 441136, Moscow, ID 83844, USA*

BRUCE B. ACKERMAN, *Idaho Department of Fish and Game, 600 South Walnut St., Boise, ID 83707, USA*

CURT M. MACK, *Gray Wolf Recovery Project, Nez Perce Tribe, P.O. Box 1922, McCall, ID 83638, USA*

**ABSTRACT** The behavioral patterns and large territories of large carnivores make them challenging to monitor. Occupancy modeling provides a framework for monitoring population dynamics and distribution of territorial carnivores. We combined data from hunter surveys, howling and sign surveys conducted at predicted wolf rendezvous sites, and locations of radiocollared wolves to model occupancy and estimate the number of gray wolf (*Canis lupus*) packs and individuals in Idaho during 2009 and 2010. We explicitly accounted for potential misidentification of occupied cells (i.e., false positives) using an extension of the multi-state occupancy framework. We found agreement between model predictions and distribution and estimates of number of wolf packs and individual wolves reported by Idaho Department of Fish and Game and Nez Perce Tribe from intensive radiotelemetry-based monitoring. Estimates of individual wolves from occupancy models that excluded data from radiocollared wolves were within an average of 12.0% (SD = 6.0) of existing statewide minimum counts. Models using only hunter survey data generally estimated the lowest abundance, whereas models using all data generally provided the highest estimates of abundance, although only marginally higher. Precision across approaches ranged from 14% to 28% of mean estimates and models that used all data streams generally provided the most precise estimates. We demonstrated that an occupancy model based on different survey methods can yield estimates of the number and distribution of wolf packs and individual wolf abundance with reasonable measures of precision. Assumptions of the approach including that average territory size is known, average pack size is known, and territories do not overlap, must be evaluated periodically using independent field data to ensure occupancy estimates remain reliable. Use of multiple survey methods helps to ensure that occupancy estimates are robust to weaknesses or changes in any 1 survey method. Occupancy modeling may be useful for standardizing estimates across large landscapes, even if survey methods differ across regions, allowing for inferences about broad-scale population dynamics of wolves. © 2014 The Wildlife Society.

**KEY WORDS** *Canis lupus*, gray wolf, hunter surveys, monitoring, northern Rocky Mountains, occupancy modeling, radiotelemetry, recovery, rendezvous sites.

Large carnivores are often the target of conservation efforts because they can have cascading effects on other species despite their relatively sparse distribution across landscapes (Gompper et al. 2006, O'Connell et al. 2006) and public interest in them is generally high. As a result, an increasing number of studies have focused on assessing carnivore abundance, relative abundance, or distribution and occupancy across large geographical areas (Patterson et al. 2004, Gompper et al. 2006, Long et al. 2007, Johnson et al. 2009). Collecting data to estimate the abundance and distribution

Received: 23 April 2013; Accepted: 12 November 2013  
Published: 13 February 2014

<sup>1</sup>E-mail: david.ausband@mso.umt.edu

<sup>2</sup>Present address: 318 Cheatham Hall Department of Fish and Wildlife Conservation, Virginia Polytechnic Institute and State University, Blacksburg, VA 24061-0321, USA

<sup>3</sup>Present address: U.S. Fish and Wildlife Service, 2600 SE 98th Ave, Suite 100, Portland, OR 97266, USA

of carnivores, however, is extremely challenging. Large carnivores generally occupy extensive areas, often live in remote and rugged habitats at low densities, and are elusive (Schonewald-Cox et al. 1991, Gros et al. 1996, Long and Zielinski 2008). Environmental, budgetary, and logistical constraints often limit surveys to small spatial scales. Aerial observations of live animals or their tracks, for example, may be feasible in open habitats but impractical in areas where dense canopy cover results in poor visibility (Ballard et al. 1992, Hayes and Harestad 2000). Camera trap surveys have successfully documented the presence of common and rare carnivores (Karanth and Nichols 1998, Johnson et al. 2009), but deploying cameras over large areas such as an entire state is expensive and logistically demanding (Swann et al. 2004). Acoustic sampling can elicit responses in certain species, but this method also can be labor intensive, biased towards large groups, and affected by topography and weather (Grinnell and McComb 2001, Ausband et al. 2011).

Developing and implementing a single survey methodology that will work across large spatial extents with varying animal distribution, topography, vegetation, and weather conditions can be financially and logistically infeasible. Thus, estimating the abundance and distribution of wide-ranging carnivores accurately across large spatial scales may require multiple survey methods employed at different spatial and temporal scales, and then merging the results. Merging the results from multiple survey methods, however, can be challenging because each method has its own assumptions, the deployment of methods may not take place at the same time, and the probability of detecting a species will vary for each method. Failure to account for the detection probability associated with each survey method also can lead to erroneous estimates of species abundance and distribution (MacKenzie et al. 2006).

Occupancy modeling can provide a useful framework for estimating the abundance and distribution of a species using data from several survey techniques and incorporate their respective detection probabilities (MacKenzie et al. 2006). Each survey method does not need to be employed at each site, and probability of occupancy can be predicted for unsampled sites where information about habitat covariates used in the modeling is available. Occupancy modeling uses detection–non-detection data from repeated visits to sampled units to estimate species occupancy across sampled and unsampled patches. Sample units can be cells within a grid and when cell size is equal to territory size, the sum of the occupancy estimates across cells is roughly equal to the abundance of territorial individuals or groups (MacKenzie et al. 2006).

Methods accounting for species misidentification (i.e., false positive errors; Royle and Link 2006) are necessary when analyses include public survey data and other data sources where misidentification errors are likely to occur (Miller et al. 2012, Rich et al. 2013). Miller et al. (2011, 2013) presented an extension of the multi-state occupancy framework (Royle and Link 2006, Nichols et al. 2008) that allows for the integration of multiple data sources, where some of the observations may include false positive

detections. This approach classifies detections based on the degree of certainty about the identification of the species. For example, indirect detections (e.g., tracks) may be classified as uncertain detections (i.e., containing potentially false positive detections), whereas direct observations of the species through aerial surveys may be classified as certain detections. Estimation of occupancy following the methods presented by Miller et al. (2011) can estimate both false negative and false positive errors among uncertain detections, which is an improvement over accounting only for false negative errors where detection is certain.

Our objective was to combine data from multiple survey techniques in an occupancy modeling framework to estimate the number of gray wolves during 2009 and 2010 in Idaho, USA. Gray wolves were reintroduced to Idaho in 1995 and 1996 (Bangs and Fritts 1996). Initially, when the size of the population of wolves was small, it was estimated annually with intensive capturing, radiocollaring, and observation using aerial surveys, which was funded almost entirely by the United States Fish and Wildlife Service (USFWS; USFWS et al. 2010). Since 1995, the wolf population in Idaho has grown to approximately 750 wolves (USFWS et al. 2012), making population estimates difficult to obtain based on a radiotelemetry approach. Wolves in Idaho were removed from the federal list of threatened and endangered species in May 2011 (USFWS 2011). Since then, the state of Idaho has managed wolves as a game species, and is federally mandated to monitor the wolf population, ensuring it continues to exceed federal (10 breeding pairs and 100 wolves; USFWS 2011) and state (15 breeding pairs and 150 wolves; Idaho Legislative Wolf Oversight Committee 2002) relisting thresholds. Monitoring the wolf population in Idaho, however, has become increasingly challenging as its range has expanded and federal funding has declined following delisting. Idaho therefore was faced with relying on limited resources and fewer radiocollared wolf packs to document continued recovery while managing their harvest.

In Montana, Rich et al. (2013) used an occupancy model based on big-game hunter surveys conducted by phone ( $n = 50,000\text{--}80,000$ ) to predict the number and distribution of wolf packs. Idaho currently does not survey hunters as intensively as Montana. We therefore developed an occupancy model that made use of a variety of data (hunter surveys, rendezvous site surveys, and radiotelemetry) to estimate the number and distribution of wolf packs across the state of Idaho and extend this approach to estimate the total number of wolves in Idaho, in 2009 and 2010. Further, because widespread use of radiotelemetry is less likely in the future because of budgetary and personnel limitations, we also assessed how estimates from occupancy modeling would be affected if no radiotelemetry data were included in the model. Finally, to evaluate our estimates, we compared them to the number of packs and total number of individual wolves reported by Idaho Department of Fish and Game (IDFG) and the Nez Perce Tribe (NPT) for 2009 and 2010 (Mack et al. 2010, Holyan et al. 2011). We considered the numbers of packs and wolves reported by IDFG and NPT to be minimum counts (i.e., naive estimates; MacKenzie

et al. 2006) because not all packs or wolves likely were detected. As a result, we expected our estimates to be greater than the minimum counts, but not substantially so because wolf monitoring in Idaho by IDFG and NPT was intensive in 2009 and 2010.

We expected that wolf occupancy would be positively influenced by prey abundance and forest cover, and negatively influenced by livestock density because of agency control of wolves in response to livestock depredation events. We further expected that increasing slope and elevation would negatively influence wolf occupancy because of the coursing predatory nature of wolves and their affinity for mild terrain roughness (Rich et al. 2013). Additionally, we expected detection of wolves would be positively related to hunter effort (i.e., days) during the fall big game season and the number of predicted rendezvous sites surveyed.

## STUDY AREA

The state of Idaho (216,632 km<sup>2</sup>) encompassed a wide variety of landscapes. Northern Idaho had a maritime climate and was dominated by western red cedar (*Thuja plicata*) and western hemlock (*Tsuga heterophylla*), whereas southern Idaho had a continental climate and was dominated by Douglas-fir (*Pseudotsuga menziesii*) and ponderosa pine (*Pinus ponderosa*; Mack et al. 2010). Elevations ranged from 457 m to over 3,650 m, annual precipitation ranged from <20 cm at low elevations to >250 cm at high elevations, and temperatures ranged from -34°C in winter to 38°C in summer (Western Regional Climate Center 2010). The majority of southern Idaho was private agricultural lands, central Idaho contained 3 contiguous wilderness areas and several highly productive prairies of mixed native and agricultural lands, and northern Idaho was predominantly public forests and private corporate timber holdings. The primary prey species for wolves in Idaho were largely elk (*Cervus elaphus*) and white-tailed deer (*Odocoileus virginianus*) with moose (*Alces alces*) and mule deer (*O. hemionus*) also likely present in the diet (USFWS 1994).

## METHODS

We modeled occupancy of wolves based on a grid spanning the state of Idaho composed of 346 sample units (686-km<sup>2</sup> grid cells). We generated detection histories for each sample unit by combining 3 survey methods (i.e., 1 occasion, 1 Jun–30 Nov, for radiotelemetry; 1 occasion, 10 Jun and 18 Aug, for rendezvous site surveys; and 12 weekly occasions, 1 Sep–30 Nov, for hunter surveys). Grid cell size was equal in area to the mean territory size of wolf packs in Idaho that included ≥1 pack member fitted with a global positioning system (GPS) radio-collar. Territory size of collared wolves was estimated using a kernel-density estimator (smoothing parameter = 80% of reference bandwidths;  $n = 27$ , 686 km<sup>2</sup>, SE = 89 km<sup>2</sup>; D. Ausband, Montana Cooperative Wildlife Research Unit, unpublished data).

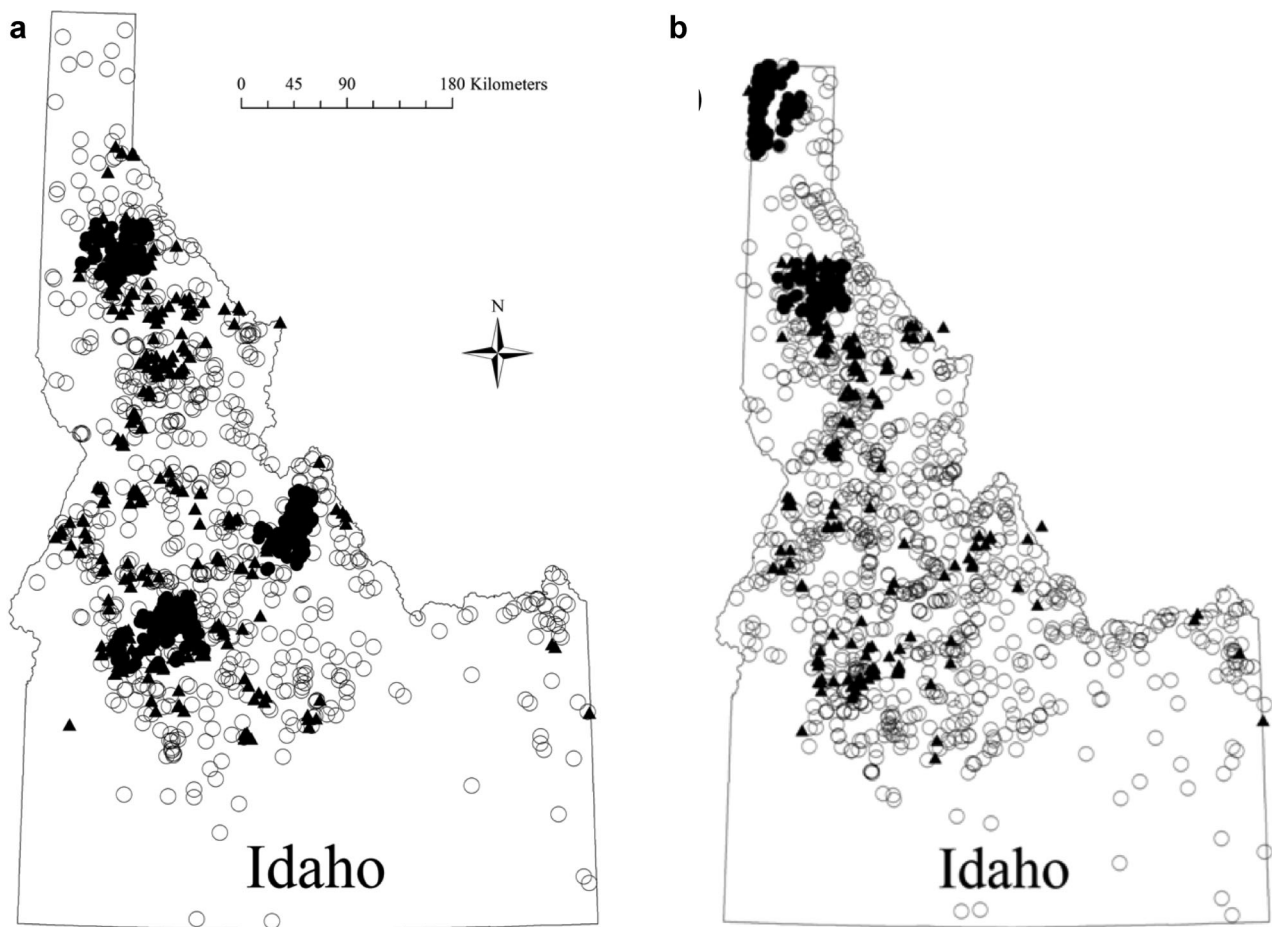
### Survey Methods

**Hunter surveys.**—Big game hunters in Idaho are required to report the results of their hunts and IDFG maintains an

annual statewide database of deer and elk hunter activities during hunting season (i.e., days afield, successful or not). We mailed surveys to approximately 12,000 randomly selected, licensed deer and elk hunters during spring 2010 and 2011. To sample evenly across the 75 Game Management Units (GMUs) that included potential wolf habitat, we identified hunters who had reported hunting for deer and elk in each GMU in September–November 2009 and 2010. For each year, we randomly selected 500 hunters from the largest GMU (6,400 km<sup>2</sup>) and then allocated sample sizes proportionally based on GMU size. We mailed surveys to the selected hunters and sent a second survey to non-respondents to account for reporting bias. The mail surveys included the following questions: 1) In what GMU did you hunt for big game during the previous hunting season and for how many days in each month? 2) Did you observe any wolves (not wolf sign) while hunting? 3) If you observed wolves, please identify the week in which you saw wolves, the GMU, a description of the location, and the number of wolves observed.

Hunting seasons occurred from 1 September to 30 November in 2009 and 2010. We assigned each observation of ≥2 wolves provided by the hunters to 1 of 12, 1-week sampling occasions. We dropped observations of single wolves to restrict our inferences to established packs and to minimize false positives. We created point locations for each hunter observation based on the descriptions of where wolves were observed using National Geographic TOPO! software (NGHT, Inc., Evergreen, CO). We dropped hunter sightings from the database when the description was insufficient to identify a point location, when wolves were observed outside of hunting season, or when wolf sign, not live wolves, was observed. We imported point locations into ArcGIS 9.3.1 (ESRI, Redlands, CA) and used the point locations to populate the 686-km<sup>2</sup> grid cells. We assigned missing values to grid cells that were not surveyed and allowed detection for hunter surveys to vary by week and month. We assumed occupancy was constant during the survey period, the same pack of wolves was present in each grid cell during the hunting season, and that the probability a hunter detected wolves at 1 site was independent of the probability wolves were detected at all other sites (MacKenzie et al. 2002).

**Rendezvous site surveys.**—To predict rendezvous site locations, we characterized historical rendezvous sites based on habitat and landscape characteristics and then used a resource selection function to map similar sites within each GMU (Ausband et al. 2010). We then surveyed predicted rendezvous sites in GMUs 6, 28, 33, 34, and 35 between 10 June and 18 August 2009 and in GMUs 1 and 6 between 12 June and 20 July 2010 (Figs. 1 and 2). We surveyed the top 3 equal-area bins of highly suitable predicted rendezvous sites on public land (Ausband et al. 2010). We recorded the presence and abundance of wolf tracks, scat, hair, daybeds, kills, and when possible, we collected genetic samples (i.e., scat and hair). We analyzed genetic samples to verify species and determine the number of unique individuals at a site (Stenglein et al. 2010, 2011). We surveyed each individual



**Figure 1.** Distribution of gray wolf detections in Idaho in (a) 2009 and (b) 2010. Open circles = hunters observed  $\geq 2$  live wolves, dark circles = detections at predicted wolf pack rendezvous sites, and dark triangles = radiocollared wolf locations.

rendezvous site once and removed detections of single wolves because we were targeting packs. If we sampled  $>1$  rendezvous site within a single  $686 \text{ km}^2$ -cell on the grid in the same year, we combined observations into a single sampling occasion based on whether we observed  $\geq 2$  wolves at  $\geq 1$  of the sites.

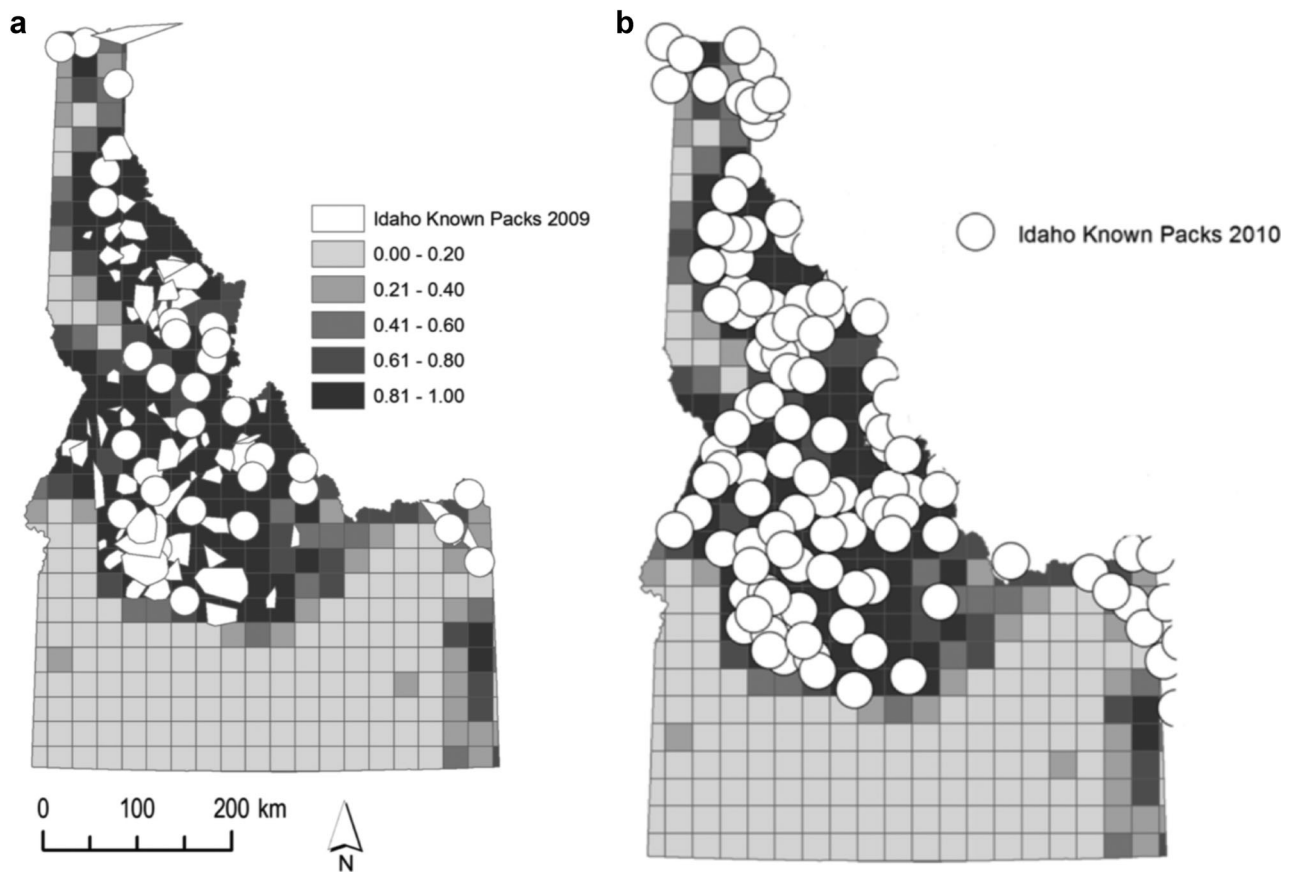
**Radiotelemetry data.**—We used locations of all very high frequency (VHF) radiocollared wolves located in Idaho between 1 June and 30 November 2009 and 2010 collected by IDFG and the NPT. We combined the location data into a single sampling occasion for each year and used only locations from wolves that were members of a pack. If a radiocollared wolf was located  $>1$  time during our annual survey period, then we randomly selected a single location from that pack to use in our analysis to meet the occupancy assumption of independence (MacKenzie et al. 2002). We imported locations into ArcGIS, overlaid locations on the  $686\text{-km}^2$  grid, and determined which grid cells contained  $\geq 1$  location from a radiocollared wolf.

### Model Covariates

We assessed 6 survey-specific covariates (Table 1). We used number of male deer (white-tailed and mule deer combined) and male elk harvested/ $\text{km}^2$  by GMU as indices of deer and

elk density because population estimates of deer and elk were not uniformly available across Idaho. Furthermore, harvest of antlered deer and elk has been used as an index of population size because they are generally correlated with deer and elk abundance (Wood et al. 1989, Hamlin and Ross 2002, Dusek et al. 2006). We calculated a GMU area-weighted mean harvest/ $\text{km}^2$  for grid cells that overlapped GMU boundaries. We also used harvest statistics from IDFG (2012) to estimate hunter days for elk, divided it by the size ( $\text{km}^2$ ) of each GMU, and used this as a measure of GMU area-weighted mean hunter effort in each grid cell. We used United States Department of Livestock statistics to obtain coarse estimates of annual domestic cattle and sheep densities by county (U.S. Department of Agriculture 2013) to calculate the county area-weighted mean density of cattle and sheep for each grid cell. We excluded wilderness areas from counties to ensure estimates of cattle and sheep density only encompassed areas where grazing was generally present. Lastly, for rendezvous site survey data, we estimated the effect of sampling effort on detection by summing the number of rendezvous sites that were surveyed in each grid cell.

We also included 3 habitat and landscape covariates (Table 1). We derived elevation and slope data from  $200\text{-m}^2$



**Figure 2.** The probability each 686-km<sup>2</sup> patch in Idaho was occupied by a wolf pack in (a) 2009 and (b) 2010. Patch size was equal in area to mean territory size of wolf packs in Idaho ( $n = 27$ ). We estimated occupancy probabilities using multiple detection state and method models (Miller et al. 2011) with mail surveys of hunters, surveys of predicted rendezvous sites, and locations of radiocollared wolves as the sampling methods. White circles and polygons indicate known wolf territories with shaded grid cells indicating increasing probability of occupancy. Wolf pack territory polygons were only available for 2009.

resolution digital elevation models (DEM; U.S. Geological Survey, National Elevation Dataset) and calculated mean elevation and slope in each grid cell. We calculated percent forest cover for 90-m<sup>2</sup> land cover pixels (Gap Analysis Project, Wildlife Spatial Analysis Lab, University of Montana) in each grid cell.

### Estimating Occupancy

We used models populated with multiple survey data each with multiple detection states (i.e., certain and uncertain) as

described by Miller et al. (2011) to estimate the probability of occurrence of wolf packs in Idaho in 2009 and in 2010. Our annual survey period was 1 June to 30 November. Whereas individual wolves may have died, joined, or left a particular pack, the majority of dispersal does not occur during June–November (M. Jimenez, U.S. Fish and Wildlife Service, unpublished data). Also, our focus was on estimating occupancy of packs and we assumed the occupancy status of an entire pack remained constant during the survey period. We assumed constant mean territory size and little overlap or

**Table 1.** Mean values of covariates included in an occupancy analysis for gray wolf packs in Idaho, 2009 and 2010, and expected relationships between covariates and a wolf pack's probability of occupancy ( $\psi$ ), detection ( $p_{11}$ ,  $r_{11}$ ), false positive detection ( $p_{10}$ ), and certain detection ( $b$ ).

| Model covariate   | 2009      |       | 2010      |       | Hypothesized relationship |                     |          |     |
|---|-----------|-------|-----------|-------|---------------------------|---------------------|----------|-----|
|   | $\bar{x}$ | SE    | $\bar{x}$ | SE    | $\psi$                    | $p_{11}$ , $r_{11}$ | $p_{10}$ | $b$ |
| Bull elk harvest (harvest/km <sup>2</sup> )                       | 0.04      | 0.002 | 0.04      | 0.002 | +                         |                     |          |     |
| Buck deer harvest (harvest/km <sup>2</sup> )                      | 0.14      | 0.006 | 0.11      | 0.004 | +                         |                     |          |     |
| Cattle density (cattle/km <sup>2</sup> )                          | 9.70      | 0.875 | 9.97      | 0.908 | -                         |                     |          |     |
| Sheep density (sheep/km <sup>2</sup> )                            | 0.32      | 0.044 | 0.29      | 0.044 | -                         |                     |          |     |
| Elevation (km)  | 1.57      | 0.026 | 1.57      | 0.026 | -                         |                     |          |     |
| Slope (°)   | 11.32     | 0.362 | 11.32     | 0.362 | -                         |                     |          |     |
| Forest (%) <sup>a</sup>   | 34.78     | 1.613 | 34.78     | 1.613 | +                         | -/+                 | -/+      | -/+ |
| Hunter effort for elk (hunter days/km <sup>2</sup> ) <sup>a</sup> | 2.60      | 0.131 | 2.43      | 0.125 |                           | +                   | -        | +   |
| No. rendezvous sites/grid cell <sup>b</sup>                       | 1.21      | 0.348 | 0.70      | 0.220 |                           | +                   |          |     |

<sup>a</sup> Covariate for sampling occasions from hunter surveys.

<sup>b</sup> Covariate for sampling occasion from rendezvous site surveys.

unoccupied space between territories. Our 3 sources of data (hunter surveys, rendezvous site surveys, locations of radiocollared wolves) yielded a total of 14 sampling occasions per year, 12 from hunter surveys, 1 from rendezvous site surveys, and 1 from radiocollar locations.

Although we rarified data by excluding detections of single wolves, we also accounted for false positive detections in the hunter surveys because public sightings can suffer from misidentifications (Gros et al. 1996). In Montana, the estimated probability of a false positive detection was <0.0001% when grid cells of roughly the same size (i.e., 600 km<sup>2</sup>) were classified as occupied if  $\geq 2$  wolves were detected by  $\geq 3$  hunters in a 1-week period (Rich et al. 2013). As a result, in sampling occasions based on hunter observations of wolves, the  $i$ th grid cell in the  $t$ th sampling occasion was treated as being a certain detection if  $\geq 3$  hunters observed  $\geq 2$  wolves, an uncertain detection if 1–2 hunters observed  $\geq 2$  wolves, a 0 if hunters observed  $\leq 1$  wolf, and a missing data value if the grid cell was not surveyed. We parameterized these sampling occasions using the probability of a hunter detecting wolves at an unoccupied site ( $p_{10}$ ), the probability of a hunter detecting wolves at an occupied site ( $p_{11}$ ), and the probability a hunter's observation of wolves is classified as certain given that the site is occupied and wolves were detected ( $b$ ; Miller et al. 2011).

Sampling occasions from rendezvous site surveys and locations of radiocollared wolves followed standard occupancy design where false positive detections were assumed not to occur (MacKenzie et al. 2002). In the sampling occasion based on surveys of predicted rendezvous sites, a certain detection was recorded for the  $i$ th grid cell if  $\geq 2$  adult wolves or  $\geq 1$  pup was detected at  $\geq 1$  surveyed rendezvous site, and non-detection was recorded for a cell if  $\leq 1$  adult wolf was detected. We assigned unsurveyed cells missing values. For the rendezvous site sampling occasion,  $q_{11}$  represented the probability we detected wolves at an occupied rendezvous site. In the sampling occasion based on locations of radiocollared wolves, a certain detection was recorded for the  $i$ th grid cell if it contained  $\geq 1$  wolf location and a non-detection was recorded if it did not. For the radiotelemetry sampling occasion,  $r_{11}$  represented the joint probability a wolf was captured, radiocollared, and located during our survey period.

We fit single season models to detection data for 2009 and 2010 using PRESENCE v 4.1 (Hines 2010) and we used Akaike's Information Criterion (AIC; Burnham and Anderson 2002) to identify the most supported model. We first examined alternative parameterizations for detection covariates. When selecting among detection models, we used the most global parameterization of occupancy parameters (all factors were included in the model). We considered alternatives where detection ( $p_{11}$ ,  $r_{11}$ ,  $q_{11}$ ) varied among survey methods, where detection ( $q_{11}$ ) for rendezvous sites varied as a function of the number of rendezvous sites surveyed in a grid cell, and where detection for hunter surveys ( $p_{11}$ ,  $p_{10}$ , and  $b$ ) varied with respect to forest cover, hunter effort for elk, week observed, and month observed. We assumed detections based on surveys of predicted rendezvous

sites or locations of radiocollared wolves were certain (Ausband et al. 2010). We accounted for this in PRESENCE by fixing  $q_{10}$  and  $r_{10}$  equal to 0 and  $b$  equal to 1 for these sampling occasions. We considered all combinations of the detection covariates and selected the model with the lowest AIC value as our best detection model. We compared estimates of wolf abundance and associated precision among models populated with data from 1) the hunter survey only, 2) hunter survey and rendezvous site data, 3) hunter survey and radiotelemetry data, and 4) all data.

We then examined pair-wise correlations between our grid cell covariates (Table 1); if a pair was highly correlated ( $|r| > 0.60$ ) we chose to retain the covariate with the larger influence on occupancy. We kept the parameterization of our best detection model and selected among alternative models for the remaining occupancy parameters. We considered all combinations of the remaining covariates predicted to influence occupancy probabilities. We compared mean detection probabilities among sampling methods to evaluate the likelihood of detecting wolves using hunter surveys, rendezvous site surveys, and locations of radiocollared wolves.

### Predicting Distribution and Number of Wolves

We did not conduct surveys in 17% ( $n = 99$ ) of GMUs in southern Idaho that have not been recolonized by wolves. Our occupancy model estimated occupancy for these cells, however, through the use of habitat covariates. We calculated cell-specific estimates of occupancy from the model with the lowest AIC value. We used cell-specific estimates of occupancy to evaluate the annual distribution of wolf packs in Idaho. Because some cells overlapped state borders and were only partially contained within Idaho we estimated the total area occupied by wolf packs in Idaho during 2009–2010 by multiplying cell-specific estimates of occupancy by their respective size (i.e., 686 km<sup>2</sup>) and then summing these values across all cells. Our final estimates of total area occupied were adjusted for partial cells on the state border when we multiplied occupancy probabilities by the percent of the cell that was contained within our study area. To assess the influence of radiotelemetry data on model estimates, we repeated the occupancy analysis as described above but withheld radiotelemetry data from the model.

To estimate the number of wolf packs in Idaho from 2009 to 2010, we divided the total area occupied (estimated with and without detections from radiotelemetry) by mean size of wolf pack territories in Idaho (686 km<sup>2</sup>, SD = 460). To estimate abundance of wolves, we multiplied the number of estimated packs by mean size of packs monitored via radiotelemetry. To calculate mean pack size, we used only packs where IDFG and NPT observers indicated accurate year-end counts. We used single-season occupancy models and employed a non-parametric bootstrap approach to estimate 95% confidence intervals (95% CI) for our estimates of total area occupied by wolf packs using Program R (Fiske and Chandler 2011) to bootstrap the top model in PRESENCE. This approach entailed resampling the

encounter histories and associated covariates 10,000 times, running the top model structure to obtain estimates of occupancy probabilities, and calculating the upper and lower bounds from the simulated distribution. We compared our estimates of the numbers of packs and wolf abundance to the minimum known number of wolf packs and estimated number of wolves in Idaho (Mack et al. 2010, Holyan et al. 2011). Minimum number of wolf packs included wolf packs residing in the state, packs that overlapped state borders, groups of wolves ( $\geq 2$  wolves with no history of reproduction), and packs that were removed because of livestock depredations between 1 June and 30 November. IDFG and NPT then estimated individual wolf abundance by multiplying the minimum number of packs by the average pack size for packs where biologists determined they had a reliable year-end (31 Dec) count. Minimum counts of packs represent year-end knowledge with the understanding that not all wolf packs could be adequately surveyed (Mack et al. 2010, Holyan et al. 2011).

## RESULTS

### Detection Methods

*Hunter surveys.*—For 2009, we mailed surveys to 11,878 hunters; 4,093 (34%) hunters returned fully completed surveys of which 610 (15% of responding hunters) reported seeing  $\geq 2$  live wolves during our 3-month survey period (Fig. 1a). For 2010, we mailed surveys to 11,834 hunters; 3,789 (32%) hunters returned fully completed surveys of

which 967 (25% of responding hunters) reported seeing  $\geq 2$  live wolves during our 3-month survey period (Fig. 1b).

*Rendezvous site surveys.*—We surveyed 437 predicted rendezvous sites in 5 GMUs in 2009 (Fig. 1a) and 252 sites in 2 GMUs in 2010 (Fig. 1b). At least 2 adult wolves or  $\geq 1$  pup were detected at 7.8% ( $n = 34$ ) and 6.4% ( $n = 16$ ) of the sites in 2009 and 2010, respectively. In 2009, 25 grid cells each contained 1 to 73 ( $\bar{x} = 17$ ,  $SD = 19$ ) surveyed rendezvous sites. In 2010, 15 grid cells each contained 1 to 38 ( $\bar{x} = 17$ ,  $SD = 13$ ) surveyed rendezvous sites.

*Radiotelemetry data.*—Personnel from IDFG and the Nez Perce Tribe located 89 radiocollared wolves from 61 packs  $\geq 1$  time in 2009 (Fig. 1a) and 71 radiocollared wolves from 46 packs  $\geq 1$  time in 2010 (Fig. 1b). In 2009, 292 locations of collared wolves were collected across 73 grid cells; each grid cell contained 1–17 locations ( $\bar{x} = 4$ ,  $SD = 2.9$ ). In 2010, 222 locations of collared wolves were collected across 58 grid cells; each grid cell contained 1 to 15 locations ( $\bar{x} = 4$ ,  $SD = 3.5$ ).

### Model Covariates and Estimating Occupancy

The parameter estimates from our best overall model for 2009 were similar with and without radiotelemetry data (Table 2). Detection probability ( $p_{11}$ ,  $r_{11}$ ,  $q_{11}$ ) varied among sampling methods (Table 3) and detection at rendezvous sites was positively related to the number of sites surveyed in a grid cell (Table 2). Weekly detection probabilities by hunters varied by sampling week and the probability of a false detection ( $p_{10}$ ) varied by sampling month (Table 2). Forest

**Table 2.** Parameter estimates for occupancy analysis of gray wolf packs in Idaho, 2009 and 2010. Models included 3 detection methods: mail surveys of hunters, surveys of predicted rendezvous sites, and locations of radiocollared wolves. We conducted separate analyses for each year and analyzed data sets that did and did not include observations of radiocollared wolves. Month, forest and effort were not in the 2009 model and sheep density was not in the 2010 model.

| Parameter                        | Variable                                    | 2009                                       |  | 2009 (no telemetry) |       | 2010    |       | 2010 (no telemetry) |        |       |       |
|----------------------------------|---|--|--|---------------------|-------|---------|-------|---------------------|--------|-------|-------|
|                                  |   | $\beta$                                    | SE   | $\beta$             | SE    | $\beta$ | SE    | $\beta$             | SE     |       |       |
| Occupancy <sup>a</sup>           | Intercept                                   | -4.68                                      | 0.900                                      | -3.37               | 0.994 | -5.78   | 1.235 | -6.05               | 1.246  |       |       |
|                                  | Slope (°)                                   | 0.19                                       | 0.033                                      | 0.14                | 0.036 | 0.21    | 0.043 | 0.21                | 0.046  |       |       |
|                                  | Elevation (km)                              | 0.99                                       | 0.358                                      | 1.00                | 0.390 | 1.58    | 0.455 | 1.62                | 0.505  |       |       |
|                                  | Sheep density (sheep/km <sup>2</sup> )      | -4.23                                      | 2.140                                      | -5.47               | 2.646 |         |       |                     |        |       |       |
|                                  | Cattle density (cattle/km <sup>2</sup> )    | 0.002                                      | 0.04                                       | -0.17               | 0.053 | -0.17   | 0.051 | -0.21               | 0.061  |       |       |
|                                  | Bull elk harvest (harvest/km <sup>2</sup> ) | 29.01                                      | 6.841                                      | 26.86               | 7.895 | 44.35   | 12.22 | 50.36               | 12.963 |       |       |
| $p_{11}$ , $r_{11}$ <sup>b</sup> | Hunter surveys                              |  |  |                     |       | -0.05   | 0.021 | -0.06               | 0.023  |       |       |
|                                  | Rendezvous surveys                          | Sampling method                            | Hunter effort, elk (days/km <sup>2</sup> ) | 0.15                | 0.071 | 0.15    | 0.071 | 0.27                | 0.160  | 0.47  | 0.428 |
| $p_{10}$ <sup>c</sup>            | Hunter surveys                              | Sep  |  | -5.71               | 0.878 | -6.00   | 0.961 | -4.57               | 0.409  | -4.65 | 0.431 |
|                                  |   | Oct  |  | -4.44               | 0.538 | -4.29   | 0.431 | -3.76               | 0.279  | -3.86 | 0.310 |
|                                  |   | Nov  |  | -3.27               | 0.268 | -3.27   | 0.278 | -3.53               | 0.276  | -3.44 | 0.269 |
|                                  |   | Hunter effort, elk (days/km <sup>2</sup> ) |  |                     |       |         | 0.24  | 0.089               | 0.31   | 0.121 |       |
| $\beta$ <sup>d</sup>             | Hunter surveys                              | Intercept                                  |  | -3.00               | 0.224 | -3.00   | 0.224 |                     |        |       |       |
|                                  |   | Sep  |  |                     |       |         | -3.20 | 0.600               | -3.20  | 0.595 |       |
|                                  |   | Oct  |  |                     |       |         | -2.32 | 0.504               | -2.31  | 0.502 |       |
|                                  |   | Nov  |  |                     |       |         | -3.32 | 0.604               | -3.28  | 0.606 |       |
|                                  |   | Forest                                     |  |                     |       |         | 0.02  | 0.008               | 0.02   | 0.008 |       |
|                                  | Hunter effort, elk (days/km <sup>2</sup> )  |  |  |                     |       | -0.18   | 0.074 | -0.18               | 0.074  |       |       |

<sup>a</sup> Probability a wolf pack occupied an area.

<sup>b</sup> Probability a wolf pack was detected at an occupied site.

<sup>c</sup> Probability a wolf pack was detected at an unoccupied site.

<sup>d</sup> Probability an observation of wolves was classified as certain given that the site was occupied and wolves were detected.

**Table 3.** Estimates for the mean probabilities wolf packs were detected ( $p_{11}$ ,  $q_{11}$ ,  $r_{11}$ ) through surveys of hunters (H), surveys of predicted rendezvous sites (RS), and by having a radiocollared pack member located via telemetry (RT); the mean probabilities a hunter detected wolves at an unoccupied site ( $p_{10}$ ); and the mean probability a hunter's observation of wolves was classified as certain given that the site was occupied and wolves were detected ( $b$ ). Probabilities were estimated using multiple detection state and method occupancy models (Miller et al. 2011).

| Year            | $p_{11}$ , $q_{11}$ , $r_{11}$ (SE) |              |              | Overall mean | $p_{10}$ (SE) Hunter surveys | $b$ (SE) Hunter surveys |
|-----------------|-------------------------------------|--------------|--------------|--------------|------------------------------|-------------------------|
|                 | H                                   | RS           | RT           |              |                              |                         |
| 2009 (all data) | 0.23 (0.031)                        | 0.59 (0.109) | 0.46 (0.042) | 0.25 (0.039) | 0.04 (0.006)                 | 0.05 (0.010)            |
| 2009 (no RT)    | 0.24 (0.032)                        | 0.60 (0.111) |              | 0.24 (0.040) | 0.02 (0.006)                 | 0.05 (0.010)            |
| 2010 (all data) | 0.31 (0.037)                        | 0.54 (0.110) | 0.34 (0.038) | 0.30 (0.039) | 0.04 (0.016)                 | 0.08 (0.026)            |
| 2010 (no RT)    | 0.32 (0.039)                        | 0.60 (0.111) |              | 0.30 (0.038) | 0.06 (0.024)                 | 0.08 (0.026)            |

cover ( $\beta = 0.04$ ,  $SE = 0.004$ ) and slope ( $\beta = 0.22$ ,  $SE = 0.027$ ) were correlated ( $r = 0.74$ ), thus we retained slope in subsequent analyses. Occupancy was positively influenced by slope, elevation, and bull elk harvest density and negatively influenced by domestic sheep density (Table 2). When we excluded radiotelemetry data, the best model also included a negative effect of cattle density on occupancy (Table 2).

For 2010, model results were similar to 2009 with and without radiotelemetry data (Table 2). As with 2009, detection varied among sampling methods (Table 3), and was positively related to the number of rendezvous sites surveyed (Table 2). Detection by hunters varied by sampling week and in 2010 was negatively associated with hunter effort (Table 2). False positive detection probabilities were positively associated with hunter effort and did not vary significantly by sampling month (Table 2). The probability that a true positive detection was classified as certain ( $b$ ) was positively influenced by forest cover, negatively associated with hunter effort and varied by sampling month although with no discernible pattern. In 2010, occupancy was positively related to slope, elevation, and bull elk harvest density and negatively related to cattle density.

Overall, probabilities of occupancy were highest in central and northern Idaho and along the eastern border of the state, adjacent to Montana (Fig. 2). Additionally, our estimates of the distribution of wolf packs in 2009 and in 2010 were consistent with the distribution of known wolf packs in Idaho (Fig. 2). We found detection probability varied among sampling methods and was highest when using rendezvous site surveys (only including grid cells surveyed for predicted rendezvous sites), followed by locations from radiocollared wolves, and lastly hunter surveys (Table 3). The estimated probability that hunters falsely reported wolves in unoccupied cells ( $p_{10}$ ) averaged 4.0% across years (Table 3). The percentage of actual observations of wolves that were classified as certain increased from 5.0% in 2009 to 8.0% in 2010 ( $b$ ; Table 3).

### Predicting Distribution and Number of Wolves

We estimated 44.0% (95,358 km<sup>2</sup>; 95% CI: 73,668–117,047 km<sup>2</sup>) and 47.0% (101,369 km<sup>2</sup>; 95% CI: 83,310–119,428 km<sup>2</sup>) of Idaho was occupied by wolf packs, when including radiotelemetry, in 2009 and 2010, respectively. When we excluded the radiotelemetry sampling occasion, our overall estimates decreased only slightly to 42.3%;

(91,732 km<sup>2</sup>; 95% CI: 70,272–113,191 km<sup>2</sup>) and 45.5% (98,566 km<sup>2</sup>; 95% CI: 83,472–113,660 km<sup>2</sup>) in 2009 and 2010, respectively.

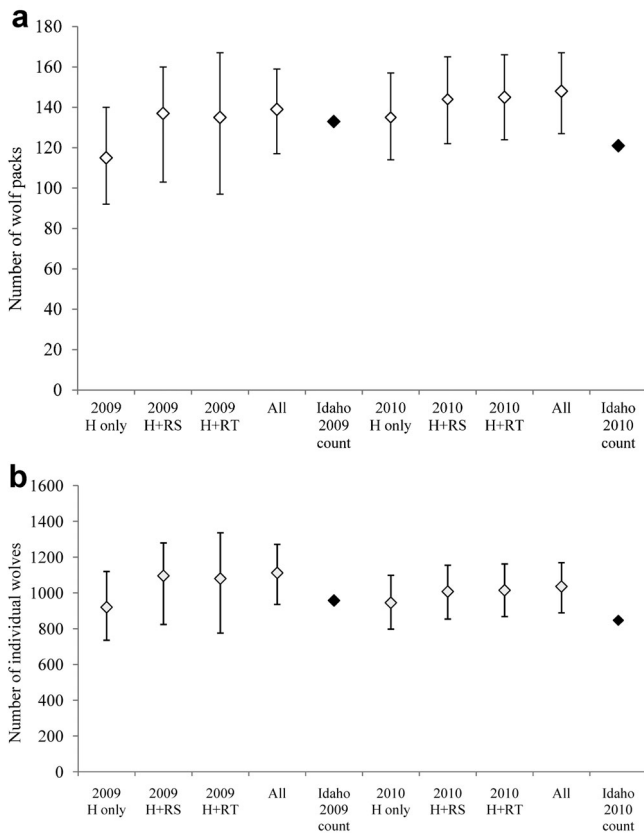
Mean number of packs from all 4 models ranged 115–139 and 135–148 for 2009 and 2010, respectively (Fig. 3a). Models using only hunter survey data estimated the least number of packs and models using all data generally estimated a marginally greater number of packs (Fig. 3a). Precision ranged from 16–28% of mean estimates in 2009 to 14–16% in 2010. Models that used all data sources generally provided the most precise estimates (Fig. 3a). When using all available data, we estimated 139 (95% CI: 117–159) and 148 (95% CI: 127–167) wolf packs in Idaho in 2009 and 2010, respectively. When we excluded radiotelemetry data, our estimates declined slightly to 137 (95% CI: 103–160) and 144 (95% CI: 122–165) wolf packs in 2009 and 2010, respectively. IDFG and NPT estimated 133 and 121 wolf packs (i.e., resident, border, and non-reproductive groups) occupied Idaho in 2009 and 2010, respectively (Fig. 3a; USFWS et al. 2010, 2011).

NPT and IDFG documented end of year pack size for 24 packs in 2009 ( $\bar{x} = 8.0$  wolves,  $SD = 2.8$ ) and 20 packs in 2010 ( $\bar{x} = 7.0$  wolves,  $SD = 3.4$ ). Using the product of estimated number of packs and mean pack size, we estimated 1,112 (95% CI: 936–1272) and 1,036 (95% CI: 889–1169) wolves occupied Idaho in 2009 and 2010, respectively. Our estimates of wolf abundance without radiotelemetry data were 1,096 (95% CI: 824–1280) and 1,008 (95% CI: 854–1155) wolves for 2009 and 2010, respectively. IDFG and NPT estimated 958 and 847 wolves (i.e., resident, border, and non-reproductive groups) occupied Idaho in 2009 and 2010, respectively (Fig. 3b). Because estimates of individual wolf abundance were derived in part from the estimated number of packs, trends in estimates of abundance and associated precision of individual wolves across the 4 models was identical to those observed on estimates of pack numbers. Generally, hunter survey data alone provided the lowest abundance estimates and models using all data had increased precision. The precision of our estimates may be overestimated because the non-parametric bootstrap method we used was unable to fully incorporate all sources of variation (i.e., occupancy, territory size, pack size).

## DISCUSSION

Methods for estimating the size of large carnivore populations are financially and logistically challenging





**Figure 3.** Abundance ( $\pm 95\%$  CI) of (a) wolf packs and (b) individual wolves in Idaho (2009–2010) estimated from occupancy models populated with data from hunter surveys (H), rendezvous site surveys (RS), and radiotelemetry (RT) data. Dark diamonds represent Idaho count data for packs and non-reproducing groups, and individual wolves (Mack et al. 2010, Holyan et al. 2011).

(Gros et al. 1996, Patterson et al. 2004, Potvin et al. 2005, Gompper et al. 2006). Whereas a variety of survey methodologies are available for estimation at fine spatial scales and for specific sampling conditions, no approach has been developed to combine these methods for estimation at the large spatial scales commensurate with the dynamics of large carnivore populations and their management by state agencies. This can be particularly problematic for carnivores such as wolves in the U.S. northern Rocky Mountains, where state agencies are required to document the recovery of previously endangered wolf populations while also implementing public harvest. To address this problem, we developed an occupancy model based on data from 3 survey methods that produced annual estimates of number and distribution of wolf packs and wolf abundance, with associated measures of precision, for the state of Idaho in 2009 and 2010.

As we expected, our modeled estimates were greater than the minimum numbers documented by IDFG and NPT. Our estimates of number of wolf packs were an average of 12.0% (SD = 9.0) greater than the IDFG and NPT estimates based on monitoring using radiotelemetry, except for the 2009 model based only on hunter survey data, which underestimated the IDFG and NPT combined estimate by

13.5%. Estimated distribution of packs from the occupancy model were commensurate with known wolf distribution in the state (Fig. 3). Our estimates of wolf abundance were an average of 17.0% (SD = 4.0) greater than IDFG and NPT estimates based on monitoring using radiotelemetry (Mack et al. 2010, Holyan et al. 2011) except for the 2009 model based only on hunter survey data which underestimated the IDFG and NPT combined estimate by 4.0%. Our estimate of the number of wolf packs increased from 2009 to 2010 yet the average pack size declined between years leading to a decrease in estimated number of individual wolves in 2010. We do not know if the decline in pack sizes recorded in 2010 was due to the first harvest season implemented in fall 2009.

We showed that a model populated with hunter sightings and rendezvous site survey data provided similar estimates of wolf abundance even in the absence of extensive radiotelemetry data. With the relatively widespread, contiguous distributions of wolves we observed and the statewide hunter surveys and focused rendezvous site surveys we implemented, withholding radiotelemetry data from our model did not strongly affect our estimates. Furthermore, comparisons of models populated with varying survey methods indicated radiotelemetry data did little to improve model performance over models populated with hunter survey data alone. The inclusion of radiotelemetry data did not appreciably change the occupancy estimates, likely because hunter sighting locations were widespread across Idaho and therefore overlapped areas where wolves were radiocollared. Where use of widespread sampling such as hunter surveys is limited, the importance of radiotelemetry data to estimation using an occupancy model would likely increase. Radiotelemetry data may compliment a monitoring program based on occupancy modeling where it could be used to test and validate other less certain data streams (e.g., hunter surveys, territory sizes) and refine the model over time.

We assumed that hunter survey data would contain a relatively high number of false positive detections compared to data collected using our other sampling methods. We found that increased hunter effort (i.e., hunter days/km<sup>2</sup>) did lead to more false detections ( $p_{10}$ ) although our estimated false detection rate was relatively low (4.0%). Hunter surveys yielded the lowest percentage of certain detections of all methods considered (Table 3). Because our definition of certain was  $\geq 3$  hunters reporting  $\geq 2$  wolves in a cell, our low certain detection rate may in part be, an artifact of relatively small sample sizes (approx. 12,000) of surveyed hunters across the state. Although hunter survey data were the workhorse in our models and relatively inexpensive to obtain, the 4% false detections and 5–8% certain detections may explain why models using only hunter survey data provided the lowest estimates of abundance (markedly in 2009); hunter survey data underestimated the state's known minimum count by 18 packs. We therefore suggest caution when using only public sightings to estimate population size; augmenting public survey data with observations collected using methods with more certain detections may improve both accuracy and precision of modeled estimates.

Detection probabilities varied by sampling method and effort. For example, the probability of detecting a wolf at an occupied site was influenced by sampling method. Increased effort in rendezvous site surveys led to higher detection rates, whereas results from increased hunter effort were equivocal (i.e., positive influence on detection rates in 2009 and a negative influence in 2010). Overall, detection probabilities across our survey methods were relatively high ( $\bar{p}=0.42$ ,  $SE=0.05$ ). Among the survey methods, rendezvous site surveys had the highest detection probability (in grid cells where  $\geq 1$  rendezvous site was surveyed) but this could be because of the intensity of our sampling ( $\bar{x}=17$  sites per cell;  $SD=17$ ).

As we predicted, increasing prey density positively influenced wolf occupancy and livestock density negatively influenced occupancy. Contrary to our expectations and results from Rich et al. (2013), however, wolf occupancy was positively influenced by slope, presumably because wolves primarily inhabited relatively mountainous portions of Idaho. Wolves in Idaho generally do not persist in areas of high livestock abundance (i.e., valley bottoms) because of subsequent agency control in response to livestock depletions (USFWS et al. 2012) and this may explain in part why wolves have not recolonized the southernmost portion of Idaho as they have other portions of the state. In contrast, we found wolves occupy mountainous areas where prey is abundant in Idaho as predicted by Oakleaf et al. (2006), and they do not persist in areas dominated by livestock production.

We assumed wolf packs did not leave cells during the hunting season and that detections were independent of one another. Detections in adjacent cells would lead to overestimates of wolf population size particularly if wolf distribution is patchy and not contiguous, but this was not the case for our study (USFWS et al. 2010, 2011). Predicting wolf abundance from an occupancy model requires 3 further assumptions: 1) average territory size is known, 2) average pack size is known, and 3) territories do not overlap. Because each of these characteristics of a wolf population can change over time, one must periodically estimate pack and territory size using field data to ensure occupancy estimates remain reliable (Rich et al. 2013).

The use of multiple survey methods can help ensure that occupancy estimates are robust to weaknesses or changes in any 1 method. Occupancy models populated, in part, with public sighting data will require regular calibration with field data, otherwise estimates could lose accuracy over time where public participation wanes or becomes unreliable. To keep an occupancy model calibrated, focal areas could be identified where periodic, intensive sampling (e.g., radiotelemetry, rendezvous site surveys) can be used to obtain independent estimates of population characteristics such as territory size and pack size. These estimates could be compared to hunter survey reports to test assumptions of the occupancy model, maintain data quality, and revise sampling approaches, if necessary (e.g., increased sampling, discarding ineffective techniques). Importantly, data from the focal areas could be used to update estimates of size of packs and territories,

which are critical for generating reliable estimates of wolf abundance from the occupancy model.

## MANAGEMENT IMPLICATIONS

Estimates of wolf abundance at statewide scales are required under the Endangered Species Act and necessary for the transition from federal to state management in the U.S. northern Rocky Mountains and in the midwestern United States (Beyer et al. 2009). Further, where wolves are a game species, management for public harvest requires understanding population dynamics that take place on broad spatial scales. In addition to providing reliable population estimates over large areas, the approach we present exploits other strengths of occupancy modeling useful to monitoring, that is, estimating occupancy for unsampled areas, understanding how terrain and habitat influence probabilities of occupancy and detection, and predicting cell-specific probabilities of colonization and extinction (MacKenzie et al. 2006). Conservation efforts routinely attempt to address populations of animals that overlap political boundaries. We suggest that occupancy modeling can provide a means for standardizing estimates of abundance and spatial distribution across ecologically arbitrary boundaries (e.g., state lines, international borders) to a scale that better reflects the dynamics of large, transboundary populations. Jurisdictional boundaries can be problematic for occupancy estimation because they can bisect cells and animals occupying those cells can be double-counted if estimates are being made independently on both sides of the border. Close collaboration between transborder agencies would be necessary to avoid such double-counting and overestimation of populations along border regions.

## ACKNOWLEDGMENTS

We thank J. Holyan, S. Nadeau, J. Rachael, S. Crea, J. Hayden, C. White, G. Pauley, J. Husseman, H. Cooley, K. Oelrich, W. Wakkinen, C. Stansbury, M. Hart, C. Tobalske, A. Fahnestock, Q. Harrison, C. Jacobs, C. Rosenthal, J. Ruprecht, B. Wojcik, S. Bassing, C. Henderson, and J. Linch. Recently deceased Idaho Fish and Game biologist Dave Spicer assisted with data collection and his insights and humor are sorely missed by all of us. Funding was generously granted from U.S. Fish and Wildlife, University of Montana, Idaho Department of Fish and Game, Nez Perce Tribe, Regina Bauer Frankenberg Foundation for Animal Welfare and Leonard X. Bosack and Bette M. Kruger Foundation. Any use of trade, firm, or product names is for descriptive purposes only and does not imply endorsement by the U.S. Government.

## LITERATURE CITED

- Ausband, D. E., M. S. Mitchell, K. Doherty, P. Zager, C. M. Mack, and J. Holyan. 2010. Surveying predicted rendezvous sites to monitor gray wolf populations. *Journal of Wildlife Management* 75:1043–1049.
- Ausband, D. E., J. Skrivseth, and M. S. Mitchell. 2011. An automated device for provoking and capturing wildlife calls. *Wildlife Society Bulletin* 35:498–503.
- Ballard, W. B., M. E. McNay, C. L. Gardner, and D. J. Reed. 1992. Use of line-intercept track sampling for estimating wolf densities. Pages 469–480

- in L. N. Carbyn, S. H. Fritts, S. H. Seip, and R. Dale, editors. North American symposium on wolves. Canadian Circumpolar Institute, University of Alberta, Edmonton, Alberta, Canada.
- Bangs, E. E., and S. H. Fritts. 1996. Reintroducing the gray wolf to central Idaho and Yellowstone National Park. *Wildlife Society Bulletin* 24: 402–413.
- Beyer, D. E., Jr., R. O. Peterson, J. A. Vucetich, and J. H. Hammill. 2009. Wolf population changes in Michigan. Pages 65–85 in A. P. Wydeven, T. R. VanDeelen, and E. J. Heske, editors. *Recovery of gray wolves in the Great Lakes region of the United States*. Springer Publishing, New York, New York, USA.
- Burnham, K. P., and D. R. Anderson. 2002. *Model selection and multi-model inference: a practical information-theoretic approach*. Second edition. Springer-Verlag, New York, New York, USA.
- Dusek, G. L., A. Wood, S. Hoekman, C. Sime, and J. Morgan. 2006. Ecology of white-tailed deer in the Salish Mountains, Northwest Montana. Montana Department of Fish, Wildlife, and Parks, Helena, USA.
- Fiske, I., and R. Chandler. 2011. unmarked: an R Package for fitting hierarchical models of wildlife occurrence and abundance. *Journal of Statistical Software* 43:1–23.
- Gompper, M. E., R. W. Kays, J. C. Ray, S. D. Lapoint, D. A. Bogan, and J. R. Cryan. 2006. A comparison of noninvasive techniques to survey carnivore communities in Northeastern North America. *Wildlife Society Bulletin* 34:1142–1151.
- Grinnell, J., and K. McComb. 2001. Roaring and social communication in African lions: the limitations imposed by listeners. *Animal Behaviour* 62:93–98.
- Gros, P. M., M. J. Kelly, and T. M. Caro. 1996. Estimating carnivore densities for conservation purposes: indirect methods compared to baseline demographic data. *Oikos* 77:197–206.
- Hamlin, K. L., and M. S. Ross. 2002. Effects of hunting regulation changes on elk and hunters in the Gravelly-Snowcrest Mountains, Montana. Federal Aid in Wildlife Restoration Project W-120-R. Montana Department of Fish, Wildlife, and Parks, Helena, USA.
- Hayes, R. D., and A. S. Harestad. 2000. Demography of a recovering wolf population in the Yukon. *Canadian Journal of Zoology* 78:36–48.
- Hines, J. E. 2010. PRESENCE 4.1: Software to estimate patch occupancy and related parameters. USGS, Patuxent Wildlife Research Center, Laurel, Maryland, USA.
- Holyan, J., K. Holder, J. Cronce, and C. Mack. 2011. Wolf conservation and management in Idaho; progress report 2010. Nez Perce Tribe Wolf Recovery Project, Lapwai, Idaho, USA.
- Idaho Department of Fish and Game [IDFG]. 2012. Online big-game harvest statistics. <<http://fishandgame.idaho.gov/ifwis/huntplanner/harvestfinder.aspx>> Accessed 22 Apr 2013.
- Idaho Legislative Wolf Oversight Committee. 2002. Idaho wolf conservation and management plan as amended by the 56th Idaho Legislature, Second Regular Session. <<http://fishandgame.idaho.gov/public/docs/wolves/plan02.pdf>>. Accessed 18 Mar 2013.
- Johnson, A., C. Vongkhamheng, and T. Saithongdam. 2009. The diversity, status and conservation of small carnivores in a montane tropical forest in northern Laos. *Oryx* 43:626–633.
- Karanth, K. U., and J. D. Nichols. 1998. Estimation of tiger densities in India using photographic captures and recaptures. *Ecology* 79: 2852–2862.
- Long, R. A., T. M. Donovan, P. Mackay, W. J. Zielinski, and J. B. Buzas. 2007. Comparing scat detection dogs, cameras, and hair snares for surveying carnivores. *Journal of Wildlife Management* 71:2018–2025.
- Long, R. A., and W. J. Zielinski. 2008. Designing effective noninvasive carnivore surveys. Pages 8–44 in R. A. Long, P. Mackay, W. J. Zielinski, and J. C. Ray, editors. *Noninvasive survey methods for carnivores*. Island Press, Washington, D.C., USA.
- Mack, C., J. Rachael, J. Holyan, J. Husseman, M. Lucid, and B. Thomas. 2010. Wolf conservation and management in Idaho; progress report 2009. Nez Perce Tribe Wolf Recovery Project, Lapwai, Idaho, Idaho Department of Fish and Game Boise, USA.
- MacKenzie, D. I., J. D. Nichols, G. B. Lachman, S. Droege, J. A. Royle, and C. A. Langtimm. 2002. Estimating site occupancy rates when detection probabilities are less than one. *Ecology* 83:2248–2255.
- MacKenzie, D. I., J. D. Nichols, J. A. Royle, K. H. Pollock, L. L. Bailey, and J. E. Hines. 2006. Occupancy estimation and modeling inferring patterns and dynamics of species occurrence. Academic Press, Burlington, Massachusetts, USA.
- Miller, D. A., J. D. Nichols, B. T. McClintock, E. H. Campbell Grant, L. L. Bailey, and L. A. Weir. 2011. Improving occupancy estimation when two types of observational error occur: non-detection and species misidentification. *Ecology* 92:1422–1428.
- Miller, D. A. W., J. D. Nichols, J. A. Gude, L. N. Rich, K. M. Podruzny, J. E. Hines, and M. S. Mitchell. 2013. Determining occurrence dynamics when false positives occur: estimating the range dynamics of wolves from public survey data. *PLoS ONE* 8(6):e65808. doi: 10.1371/journal.pone.0065808
- Miller, D. A. W., L. A. Weir, B. T. McClintock, E. H. Campbell Grant, L. L. Bailey, and T. R. Simons. 2012. Experimental investigation of false positive errors in auditory species occurrence surveys. *Ecological Applications* 22:1675–1688.
- Nichols, J. D., L. L. Bailey, A. F. O'Connell, N. W. Talancy, E. H. Campbell Grant, A. T. Gilbert, E. M. Annand, T. P. Husband, and J. E. Hines. 2008. Multi-scale occupancy estimation and modeling using multiple detection methods. *Journal of Applied Ecology* 45:1321–1329.
- Oakleaf, J. K., D. L. Murray, J. R. Oakleaf, E. E. Bangs, C. M. Mack, D. W. Smith, J. A. Fontaine, M. D. Jimenez, T. J. Meier, and C. C. Niemeyer. 2006. Habitat selection by recolonizing wolves in the Northern Rocky Mountains of the United States. *Journal of Wildlife Management* 70: 554–563.
- O'Connell, A. F., N. W. Talancy, L. L. Bailey, J. R. Sauer, R. Cook, and A. T. Gilbert. 2006. Estimating site occupancy and detection probability parameters for meso- and large mammals in a coastal ecosystem. *Journal of Wildlife Management* 70:1625–1633.
- Patterson, B. R., N. W. S. Quinn, E. F. Becker, and D. B. Meier. 2004. Estimating wolf densities in forested areas using network sampling of tracks in snow. *Wildlife Society Bulletin* 32:938–947.
- Potvin, M. J., T. D. Drummer, J. A. Vucetich, D. E. Beyer, Jr., R. O. Peterson, and J. H. Hammill. 2005. Monitoring and habitat analysis for wolves in upper Michigan. *Journal of Wildlife Management* 69:1660–1669.
- Rich, L. N., R. E. Russell, E. M. Glenn, M. S. Mitchell, J. A. Gude, K. M. Podruzny, C. A. Sime, K. Laudon, D. E. Ausband, and J. D. Nichols. 2013. Estimating occupancy and predicting numbers of gray wolf packs in Montana using hunter surveys. *Journal of Wildlife Management* 77:1280–1289.
- Royle, J. A., and W. A. Link. 2006. Generalized site occupancy models allowing for false positive and false negative errors. *Ecology* 87:835–841.
- Schonewald-Cox, C., R. Azari, and S. Blume. 1991. Scale, variable density, and conservation planning for mammalian carnivores. *Conservation Biology* 5:491–495.
- Stenglein, J. L., L. P. Waits, D. E. Ausband, P. Zager, and C. M. Mack. 2010. Efficient noninvasive genetic sampling for monitoring reintroduced wolves. *Journal of Wildlife Management* 74:1050–1058.
- Stenglein, J. L., L. P. Waits, D. E. Ausband, P. Zager, and C. M. Mack. 2011. Estimating gray wolf pack size and family relationships using noninvasive genetic sampling at rendezvous sites. *Journal of Mammalogy* 94:784–795.
- Swann, D. E., C. C. Hass, D. C. Dalton, and S. A. Wolf. 2004. Infrared-triggered cameras for detecting wildlife: an evaluation and review. *Wildlife Society Bulletin* 32:357–365.
- U.S. Department of Agriculture. 2013. National Agriculture Statistics Service. <<http://www.nass.usda.gov>>. Accessed 7 Jan 2013.
- U.S. Fish Wildlife Service [USFWS]. 1994. The reintroduction of gray wolves to Yellowstone National Park and Central Idaho. Appendix 9. Final Environmental Impact Statement. USFWS, Denver, Colorado, USA.
- U.S. Fish Wildlife Service [USFWS]. 2011. Endangered and threatened wildlife and plants; Reissuance of final rule to identify the Northern Rocky Mountain population of gray wolf as a distinct population segment and to revise the list of endangered and threatened wildlife. Federal Register 76, USFWS, Denver, Colorado, USA.
- U.S. Fish Wildlife Service [USFWS], Idaho Department of Fish and Game, Montana Fish, Wildlife & Parks, Nez Perce Tribe, National Park Service, Blackfoot Nation, Confederated Salish and Kootenai Tribes, Wind River Tribes, Washington Department of Fish and Wildlife, Oregon Department of Fish and Wildlife, Utah Department of Natural Resources, Idaho Department of Fish and Game, and USDA Wildlife Services. 2012.

- Northern Rocky Mountain Wolf Recovery Program 2011 Interagency Annual Report. M. D. Jimenez and S. A. Becker, editors. USFWS, Ecological Services, Helena, Montana, USA.
- U.S. Fish Wildlife Service [USFWS], Montana Fish, Wildlife & Parks, Nez Perce Tribe, National Park Service, Blackfeet Nation, Confederated Salish and Kootenai Tribes, Wind River Tribes, Washington Department of Wildlife, Oregon Department of Wildlife, Utah Department of Natural Resources, and USDA Wildlife Services. 2011. Rocky Mountain Wolf Recovery 2010 Interagency Annual Report. C. A. Sime and E. E. Bangs, editors. USFWS, Ecological Services, Helena, Montana, USA.
- U.S. Fish Wildlife Service [USFWS], Nez Perce Tribe, National Park Service, Montana Fish, Wildlife and Parks, Blackfeet Nation, Confederated Salish and Kootenai Tribes, Idaho Fish and Game, and USDA Wildlife Services. 2010. Rocky Mountain Wolf Recovery 2009 Interagency Annual Report, C. A. Sime, and E. E. Bangs, editors. USFWS, Ecological Services, Helena, Montana, USA.
- Western Regional Climate Center. 2010. Historical climate information. <<http://www.wrcc.dri.edu>>. Accessed 12 Nov 2010.
- Wood, A. K., R. J. Mackie, and K. L. Hamlin. 1989. Ecology of sympatric populations of mule deer and white-tailed deer in a prairie environment. Final Report, Federal Aid in Wildlife Restoration Projects W-100-R and W-120-R. Montana Department of Fish, Wildlife, and Parks, Helena, USA.

*Associate Editor: Kevin McKelvey.*